

GLOBUS



Stone picker Model SB

GSS33C10B / GSS44C10B

User manual and spare parts

Underhaug

WELCOME AS A UNDERHAUG CUSTOMER!

Congratulations on purchasing a Globus product! Before using the equipment, we ask that you carefully read the user manual. You should keep this manual and pass it along if you sell the product to others.

Underhaug manufactures a wide range of products, including stone pickers, stone rakes, seeders, round bale forks, pallet forks, harrows, Cambridge rollers, crosskill rollers, snow blowers, potato machines, excavation buckets, quick coupler attachments, and other construction equipment for excavators.

If you would like to learn more about our products, you can visit our website at www.underhaug.no or contact us by phone or email.

Our goal is for you to be a satisfied Globus customer. To achieve this, we focus on quality and user-friendly products. In collaboration with our dealers, we aim to solve any problems that may arise and guarantee the supply of spare parts for 10 years.

Underhaug is a forward-looking company, and we are committed to continuous product development. We would appreciate receiving feedback from you as a customer. Both positive and negative experiences help strengthen our development and make our products better. Please feel free to send us ideas or suggestions for product modifications or additional equipment via email at arild@underhaug.no. All suggestions will be considered during future product upgrades.

We recommend that you fill out the necessary information about the product you have acquired in the table below. This will make it easier and faster to handle any inquiries for spare parts and/or additional equipment. It is also helpful in case of a product warranty claim.

Best regards,
Underhaug AS

PRODUCT INFORMATION:

| | |
|-----------------------------------|--|
| Art. no.: (see type plate) | |
| Serial no.: (see type plate) | |
| Production year: (see type plate) | |
| Purchase date: | |
| Distributor: | |

Underhaug AS
Rev. 1.1
01.03.2025

DECLARATION OF CONFORMITY

Producer: Underhaug AS

Address: Torlandsveien 3
4365 Nærbø

N-NORWAY

We hereby declare under our own responsibility that the following product:

Type: Globus *Stone picker Model SB GSS33C10B / GSS44C10B*

Serial No.:

Year of Manufacture: 2025->

covered by this declaration, complies with the following standards:

- EN294 (13857 anno 2008)
- NS/EN 13021: 2003 + A1: 2008
- NS/EN/ISO 12100-1 2005
- NS/EN/ISO 12100-2
- Direktiv 2006/42/EF

Nærbø, March 1, 2025



Sales manager Arild Høien

INNHOLD

| | | |
|----------|--------------------------------|-------------|
| 1 | Introduction | Side |
| | Welcome as customer | 3 |
| | Product information | 3 |
| | Declaration of conformity | 4 |
| 2 | Safety | |
| | User Manual | 5 |
| | Caution | 5 |
| | Crushing hazard | 5 |
| | Safety labeling | 6 |
| 3 | Product Information | |
| | Intended use | 7 |
| | Construction and functions | 7 |
| | Technical data | 7 |
| | Additional equipment | 8 |
| 4 | Assembly and Connection | |
| | Assembly | 8 |
| | Adjustment of the PTO-shaft | 8 |
| | Connection | 9 |
| 5 | User tips | |
| | PTO | 9 |
| | User tips | 10 |
| 6 | Maintenance | |
| | Retightening | 10 |
| | Replace tines | 11 |
| | Color code | 11 |
| 7 | Warranty | |
| | Warranty terms | 11 |
| 8 | Spare parts | |
| | Frame and cutter | 12 |
| | Belt and chain drive | 15 |
| | Chain and drive shaft | 18 |
| | Hydraulic | 21 |
| | Wheel and hub | 23 |
| | Maintenance overview | 25 |
| | Notes | 26 |

2 SAFETY

2.1 User Manual

Everyone who operates the Globus stone picker model SB must familiarize themselves with the contents of the user manual before using the machine.

2.2 Caution

Make sure no one is within the working area of the stone picker. Stones, soil, and other foreign objects moved by the machine can injure people, damage vehicles, buildings, or other property.

2.3 Risk of Crushing

If a stone becomes jammed in the rake, the power take-off must always be disengaged, the engine turned off, and the key removed from the ignition before cleaning begins. If needed, the box lid can be lifted and tipped forward. Never insert hands or feet into the machine's opening to clean it.

Be aware of the risk of crushing when tipping the box back into position.

2.4 Crushing Hazard at Belts and Box

Ensure that no one is near the stone picker while it is in operation. The rotating belts present a significant crushing hazard that can cause serious injury.

Never stand within the front opening of the stone picker while the belts are rotating, or near the box while it is being tipped and emptied. Always remember to disengage the power take-off and ensure the rotor has stopped when leaving the tractor seat.

2.5 Power Transmission Hazard

Ensure the protective cover around the power transmission shaft is always in place and secured with the included chains to prevent rotation during use. Avoid being near the shaft while it is rotating. Clothing or similar items that get caught in an unprotected shaft can cause severe injuries. For additional information on the use and safety of the power transmission shaft, refer to the separate manual included with the shaft.

2.6 Repairs

Before performing any maintenance or repairs, the engine must always be turned off and the key removed from the ignition, or the stone picker must be disconnected from the tractor. Never stay under machines suspended by the tractor's hydraulics. Always ensure the stone picker is properly supported or parked securely before starting work.

If cleaning or service must be performed with the box in the raised position, always use the safety clamps on the cylinders in case of hydraulic pressure loss and accidental lowering of the box.

2.7 Pressurized Hydraulics

The stone picker is equipped with hydraulically controlled tipping and lifting. Make sure no one is nearby when hydraulic functions are performed. Hydraulic oil under pressure can penetrate the skin and cause serious injuries or infections. Always wear eye protection and gloves, and exercise caution when working with hydraulics. Seek medical attention immediately in case of injury.

2.8 Safety Markings

The Globus stone picker SB is equipped with various warning labels indicating precautions that must be taken to avoid injuries and accidents. The symbols appear on warning labels located in different areas of the machine.

These are illustrated in the images below.

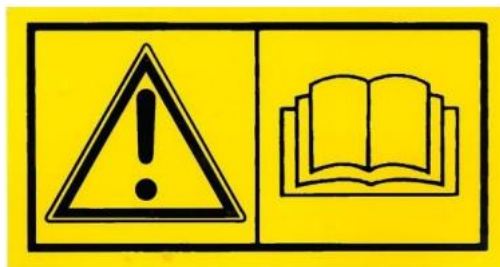
If labels become detached or unreadable, replacements can be ordered from the manufacturer or dealer.



The machine is designed for 540 RPM



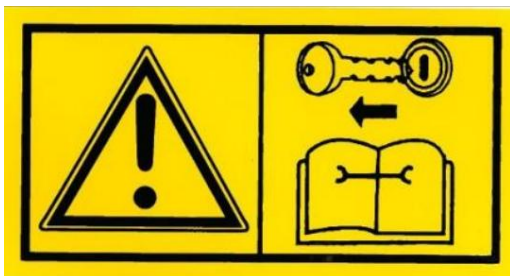
Rotating parts.



Read the manual.



Warning.



During repairs, the key must always be removed from the ignition.

2.9 Lifting points

The machine is fitted with two lifting eyes, identified by the illustrated symbol. Be aware that the machine weighs approximately 2100 kg; always use lifting straps rated for this total load.



3 PRODUCT INFORMATION

3.1 Area of Use

The Globus model SB is a single-operator machine designed to collect stones ranging in size from 3 to 25 cm in diameter. The stone picker can be used after raking with a stone rake or directly on harrowed soil. The machine requires a trained operator, and the user manual should be read before connection and operation, even if the user has prior experience with similar equipment.

3.2 Construction and Functions

The Globus model SB is built on a frame with an independent wheel system that can be height-adjusted hydraulically during the emptying/tipping of the stone box. The machine is connected to the tractor's lower link arms, and the working height is adjusted using the tractor's linkage system. The SB is powered by the tractor's power take-off (PTO) using a drive shaft equipped with a slip clutch to prevent overload.

3.3 Technical Specifications

The SB stone picker is delivered complete with a PTO shaft featuring a slip clutch and a 33 mm opening in the main belt. It also comes with standard wheel dimensions of 400/60-15.5.

| Model | GSS 33mm | GSS 44mm |
|--------------------|----------|----------|
| Working width | 160 cm | 160 cm |
| Transport width | 195 cm | 195 cm |
| Power requirement | 60 hk | 60 hk |
| Capacity stone box | 3400 kg | 3400 kg |
| Working dept | 0-30 cm | 0-30 cm |
| Main belt opening | 33 mm | 44 mm |
| Weight | 2100 kg | 2100 kg |

3.3 Additional equipment

Available accessories for the Globus model SB stone picker are listed below. Drawings and parts lists for each item can be found further back in the user manual.

| Art. no. | Description | Page |
|----------|------------------------|------|
| 926265 | Belt 28mm opening | 16 |
| 926273 | Belt 33mm opening | 16 |
| 926276 | Belt 44mm opening | 16 |
| 011362 | Wheel 480/45-17" (set) | 24 |

4 ASSEMBLY AND CONNECTION

4.1 Assembly

The stone picker is delivered fully assembled and ready for use unless otherwise agreed. In some cases, it may be delivered with transport feet, requiring the wheels to be mounted.

4.2 Adapting the PTO Shaft

Always use the power take-off (PTO) shaft supplied with the machine. It is designed to meet the machine's power requirements and is equipped with a slip clutch to prevent overloads.

Some tractors have a high-mounted PTO, which results in a large angle on the PTO shaft, thereby reducing its lifespan. The angle should be as small as possible and ideally not exceed 25 degrees. The following procedure is recommended to adjust the shaft:

1. Mount the stone picker on the tractor without the PTO shaft. Ensure that there is adequate clearance between the tractor and the machine at all lifting heights, including when using the top link.
2. Find the position where the distance between the spline pin on the rotor and the tractor is shortest. Then, pull the PTO shaft apart and attach it to the profile pipes, placing the pipes side by side.
3. Mark the pipes for cutting and calculate at least 15mm of clearance at the ends.
4. Check the longest distance between the spline pins. If this is the working position, the profile pipes should still overlap each other by half the length of the pipe.
5. Once this is done, the shaft can be cut. It is important to cut the same amount from each pipe.

File off any burrs that may prevent smooth movement, clean, and grease the profile pipes with grease. Mount the shaft and carefully check the fit in all movements.

4.3 Connection

- Ensure that no one is between the tractor and the stone picker during the connection process.
- Reverse the tractor towards the machine and stop the engine before attaching the lower link arms to the 3-point hitch. Use the stabilizer bars on the tractor to prevent uncontrolled side movements during operation.
- Attach the hydraulic hoses for tipping and lifting. Ensure that the hoses are tight and undamaged before using any hydraulic functions.
- First, mount the PTO shaft onto the stone picker and secure the safety chain to prevent rotation of the protective cover. Ensure that the protective covers are intact and replace them if damaged. Follow the instructions for adapting the PTO shaft in section 4.2 and refer to the PTO shaft manual for further guidance.

5. USER TIPS

5.1 Power Take-Off

The stone picker is designed for a power take-off (PTO) that provides 540 RPM. The driving speed and gear selection entirely depend on the conditions and the type of tractor. The PTO should only be engaged at low engine speed.

5.2 User Tips

- Before starting stone picking, it is necessary to harrow well to bring stones to the surface. Larger stones, approximately 30-40 cm in diameter, should be removed before driving.
- Evaluate the field to be picked, and if possible, adjust the driving direction to avoid significant side slopes and downhill areas.
- To optimize operations, it is recommended to rake with a stone rake after harrowing.
- Choose a speed that provides consistent forward movement, as this makes the job easier. However, adjust the speed according to the conditions.
- The PTO should normally run at 540 RPM, as this speed ensures a good filling of the stone box.
- Be cautious of larger stones. Reduce both the driving speed and the PTO speed slightly to avoid damage and protect the machine.
- When driving over solid stones, always reverse slightly and lift the machine before continuing. This prevents deformation and damage to the blades and belts.
- Ensure you are on a flat surface when tipping the box to avoid tipping the machine over.

6. MAINTENANCE

6.1 Re-tightening

After a few hours of operation, all bolt connections should be checked and re-tightened where necessary. This should be checked regularly thereafter.

6.2 Belt Replacement

The Globus SB stone picker is equipped with belts that cannot be split. If the belt needs to be replaced, the drive shafts and roller holders must be removed, and the belt must be fully lifted out.

6.3 Color Code

The color code for the paint is red RAL 3000.

7. WARRANTY TERMS

7.1 Warranty

Underhaug AS guarantees that the product, including all parts, is manufactured according to the applicable specifications and is free from material or manufacturing defects for a period of 12 months from the date of sale. The date of sale is the invoice date. A receipt of paid invoice serves as the warranty certificate. For products with a serial number, it must be included on the invoice.

7.2 Valid Warranty

For the warranty to be valid, the following conditions must apply:

- The product must be set up and used according to the instructions and warnings provided by the manufacturer or dealer.
- Warranty claims must be submitted in writing to the dealer or manufacturer immediately after the fault occurs and within the warranty period.
- Written and/or photographic documentation of the fault must be provided. The product's type designation, serial number, and model year must also be included.

Once the warranty is approved, a time and place for the repair will be agreed upon, and necessary parts will be sent to the dealer. The manufacturer will define the costs for remedying faults that are covered by the warranty.

7.3 What is covered by a valid warranty

- The warranty covers the repair of defects, faults, or issues with the product or its components.
- The warranty covers faults caused by material failure, manufacturing errors, assembly mistakes, or consequential damage due to a lack of testing and inspection that should have been carried out by the manufacturer.
- The warranty covers new parts delivered free of charge under normal shipping conditions to the dealer. If faster delivery of parts is requested, the additional cost must be covered by the customer.

7.4 Invalid Warranty

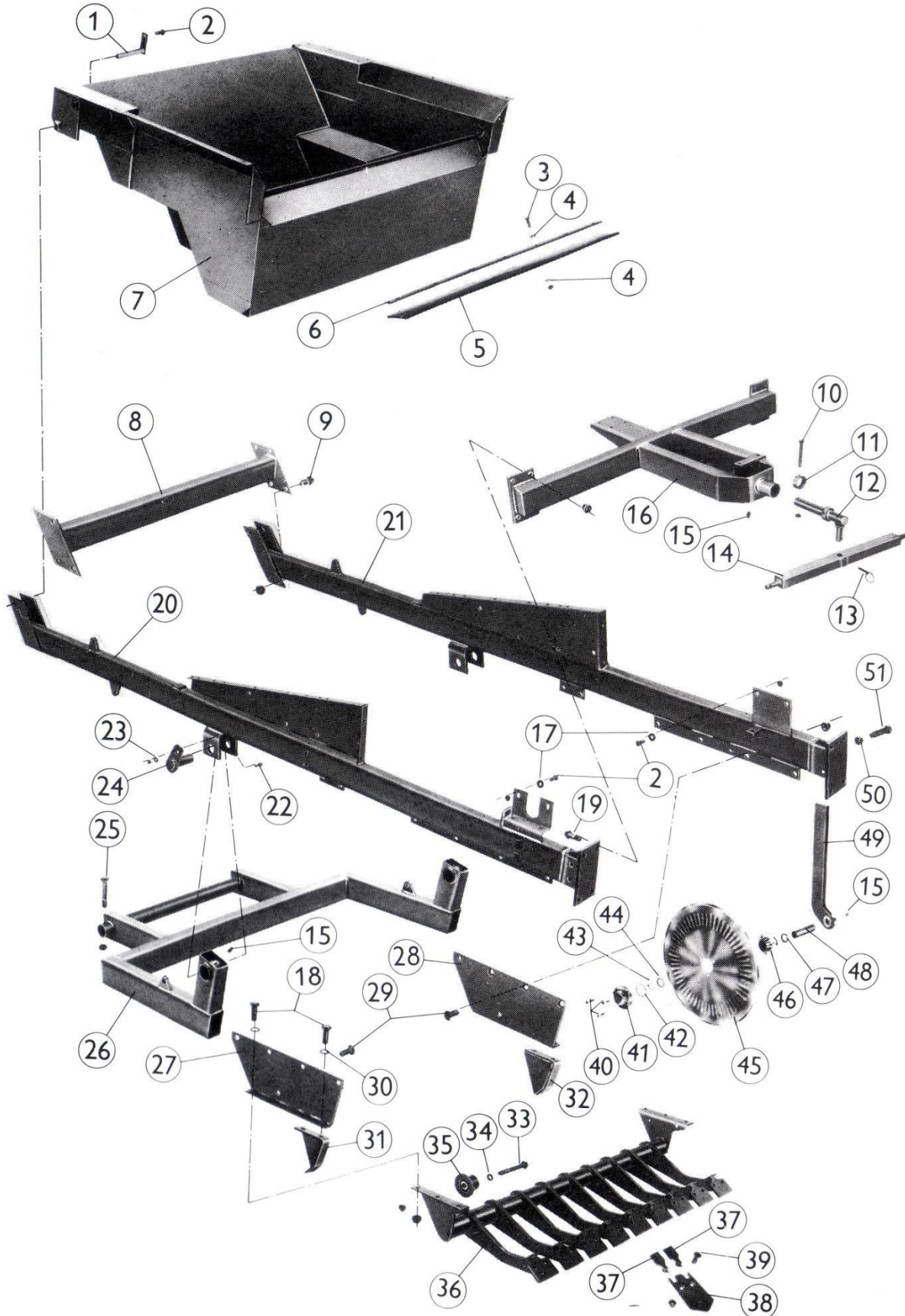
- The warranty is void if the product develops faults or damage due to misuse or failure to follow the instructions in the user manual.
- The warranty is void if the product is used for purposes other than those described.
- The warranty is void if non-original spare parts are used or if prescribed maintenance of the product is not followed. Documentation of performed maintenance may be required.

7.5 What is not covered by the warranty

- The warranty does not cover economic loss due to operational downtime.
- The warranty does not cover consequential damages caused by misuse.
- The warranty does not cover normal wear and tear.
- The warranty does not cover the transportation of the product between the customer and dealer for repair.
- The warranty does not cover travel, meals, or accommodation for service personnel. The product must be transported to the nearest dealer, or alternatively, the customer must cover the travel, meals, and accommodation costs for service personnel if the warranty work is performed at the product's location.

8. SPARE PARTS

8.1 Frame and cutter

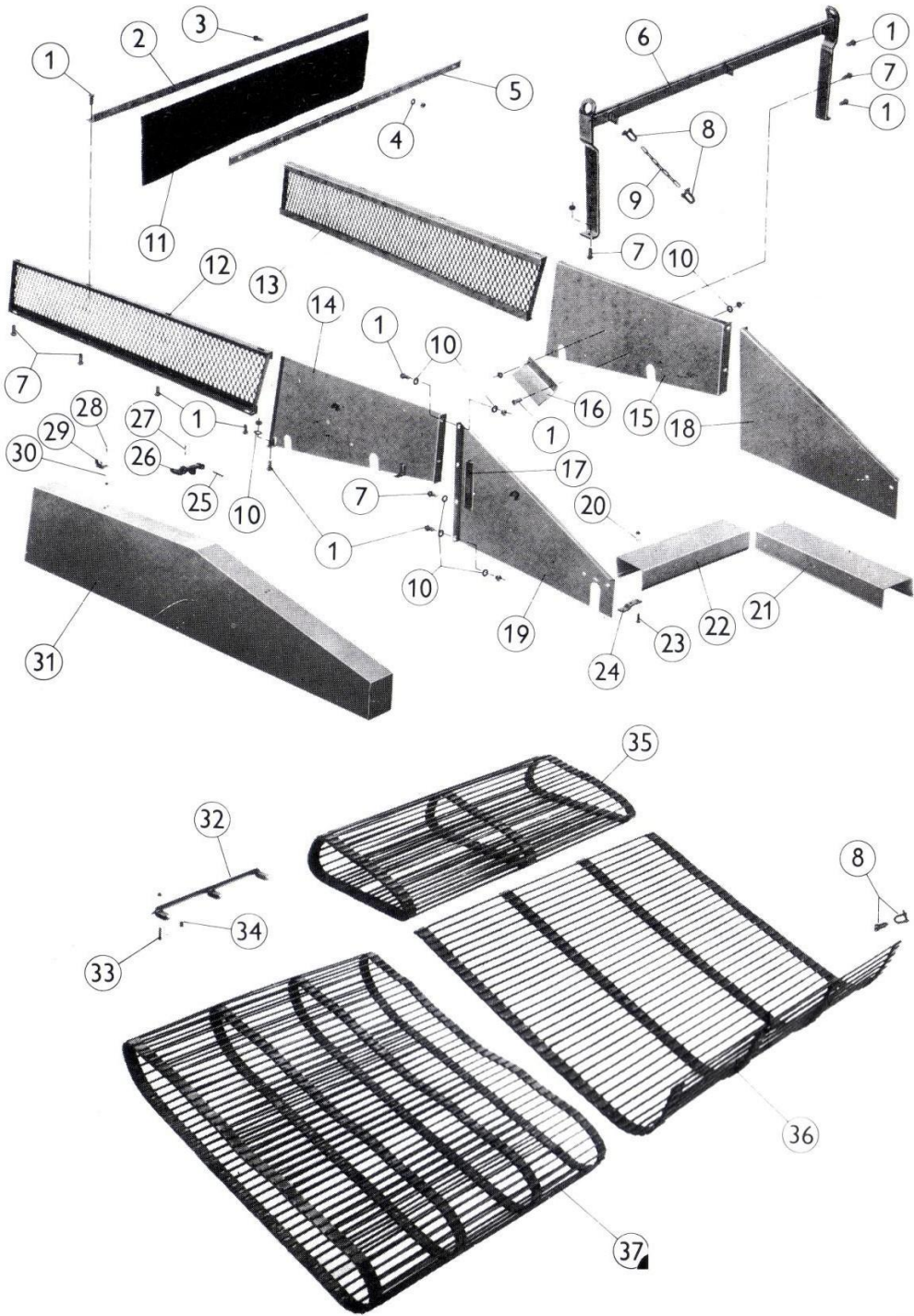


8.1 Frame and cutter

| POS: | Art. no | Description | Qty. | Serial no. | Note |
|------|---------|------------------------------|------|------------|------|
| 1 | 925796 | Hinge Bolt | 2 | 100-> | |
| 2 | 033625 | Screw M12x25 | 2 | 100-> | |
| | 016008 | Lock Nut M12 | 2 | 100-> | |
| 3 | 033630 | Screw M12x30 | | 100-> | |
| | 016008 | Lock Nut M12 | | 100-> | |
| 4 | 012916 | Washer | | 100-> | |
| 5 | 925994 | Rubber Strip | 1 | 100-> | |
| 6 | 925834 | Clamp | 1 | 100-> | |
| 7 | 925715 | Box | 1 | 100-> | |
| 8 | 925671 | Cross Pipe | 1 | 100-> | |
| 9 | 033840 | Screw M20x40 | 8 | 100-> | |
| | 016000 | Lock Nut M20 | 8 | 100-> | |
| 10 | 032690 | Screw M12x90 | 1 | 100-> | |
| 11 | 925669 | Retaining Ring | 1 | 100-> | |
| 12 | 925823 | Drawbar Shaft | 1 | 100-> | |
| 13 | 010700 | Cotter Pin | 1 | 100-> | |
| 14 | 068208 | Drawbar | 1 | 100-> | |
| 15 | 039920 | Grease Nipple | 1 | 100-> | |
| 16 | 925852 | Draw | 1 | 100-> | |
| 17 | 012919 | Washer | 2 | 100-> | |
| 18 | 033850 | Screw M20x50 | 4 | 100-> | |
| | 016000 | Lock Nut M20 | 4 | 100-> | |
| 19 | 033855 | Screw M20x55 | 8 | 100-> | |
| | 016000 | Lock Nut M20 | 1 | 100-> | |
| 20 | 925602 | Frame Pipe Right | 1 | 100-> | |
| 21 | 925611 | Frame Pipe Left | 1 | 100-> | |
| 22 | 033530 | Screw M10x30 | 2 | 100-> | |
| | 016006 | Lock Nut M10 | 2 | 100-> | |
| 23 | 012918 | Washer | 2 | 100-> | |
| 24 | 925628 | Bolt | 2 | 100-> | |
| 25 | 032600 | Screw M12x100 | 2 | 100-> | |
| | 016008 | Lock Nut M12 | 2 | 100-> | |
| 26 | 925730 | Wheel Arm | 1 | 100-> | |
| 27 | 925938 | Cutting Plate Right | 1 | 100-> | |
| 28 | 925941 | Cutting Plate Left | 1 | 100-> | |
| 29 | 015040 | Hex Screw M20x45 Countersunk | 8 | 100-> | |
| 30 | 012945 | Washer | 8 | 100-> | |
| 31 | 926461 | Belt Protection Right | 1 | 100-> | |
| 32 | 926464 | Belt Protection Left | 1 | 100-> | |
| 33 | 032703 | Screw M16x110 | | 100-> | |
| | 016010 | Lock Nut M16 | | 100-> | |

| | | | | | |
|----------|--------|---------------------------------|----|-------|--------------------------|
| 34 | 012927 | Washer | | 100-> | |
| 35 | 925879 | Roller with Flange 90mm | 2 | 100-> | |
| 36 | 925971 | Blade Holder | 1 | 100-> | |
| 37 | 300419 | Flaps | 18 | 100-> | |
| 38 | 926187 | Cutting Plate | 9 | 100-> | |
| 39 | 015038 | Hex Screw M16x40 | 18 | 100-> | |
| 40 | 031335 | Hex Screw M8x35 | 6 | 100-> | |
| 41 | 056156 | Cover | 2 | 100-> | |
| 42 | 010775 | O-ring | 2 | 100-> | |
| 43 | 011266 | Retaining Ring | 2 | 100-> | |
| 44 | 011292 | Shim Washer | 2 | 100-> | |
| 45 | 056114 | Roller Washer | 2 | 100-> | |
| 46 | 066102 | Roller Knife Bearing | 2 | 100-> | |
| | 060624 | Roller Knife Bearing Complete | 2 | 100-> | Incl.pos 40,42 and 46-48 |
| 47 | 010772 | Rubber Sealing Ring | 2 | 100-> | |
| 48 | 066108 | Shaft | 2 | 100-> | |
| 49 | 925955 | Roller Knife Arm Left | 1 | 100-> | |
| | 925951 | Roller Knife Arm Right | 1 | 100-> | |
| 50 | 015830 | Nut M20 | 2 | 100-> | |
| 51 | 067042 | Set Screw M20x75 | 2 | 100-> | |
| NOT ILL. | | | | | |
| | 925985 | Complete Roller Knife Arm Right | 1 | 100-> | |
| | 925986 | Complete Roller Knife Arm Left | 1 | 100-> | |

8.2 Belt and sideplates



8.2 Belt and sideplates

| POS | Art.no | Qty. | Serial no. | Description |
|-----|--------|------|------------|--|
| 1 | 033625 | | 100-> | Screw M12x25 |
| | 016008 | | 100-> | Lock Nut M12 |
| 2 | 925847 | 1 | 100-> | Angle Iron |
| 3 | 033530 | | 100-> | Screw M10x30 |
| | 016006 | | 100-> | Lock Nut M10 |
| 4 | 012916 | | 100-> | Base Washer |
| 5 | 925834 | 1 | 100-> | Clamping Iron |
| 6 | 925895 | 1 | 100-> | Mounting |
| 7 | 033635 | 2 | 100-> | Screw M12x30 |
| | 016008 | 2 | 100-> | Lock Nut M12 |
| 8 | 010861 | 4 | 100-> | Shackle |
| 9 | 925838 | 2 | 100-> | Chain |
| 10 | 012919 | | 100-> | Base Washer |
| 11 | 925838 | 1 | 100-> | Splash Guard |
| 12 | 925850 | 1 | 100-> | Side Gate Right |
| 13 | 925851 | 1 | 100-> | Side Gate Left |
| 14 | 925758 | 1 | 100-> | Rear Side Plate Right |
| 15 | 925759 | 1 | 100-> | Rear Side Plate Left |
| 16 | 925803 | 2 | 100-> | Game List |
| 17 | 925763 | 1 | 100-> | Tension Roller Mount |
| 18 | 925704 | 1 | 100-> | Front Side Plate Left |
| 19 | 925812 | 1 | 100-> | Front Side Plate Right |
| 20 | 012903 | | 100-> | Base Washer |
| 21 | 925749 | 1 | 100-> | Power Take-Off Cover |
| 22 | 925748 | 1 | 100-> | Cover |
| 23 | 033416 | 1 | 100-> | Screw M8x16 |
| | 016005 | 1 | 100-> | Lock Nut M8 |
| 24 | 925869 | 1 | 100-> | Mounting |
| 25 | 925779 | 1 | 100-> | Bolt |
| 26 | 925777 | 2 | 100-> | Rubber Strap |
| 27 | 029701 | 2 | 100-> | Cotter Pin |
| 28 | 925776 | 2 | 100-> | Hood Mount Complete. Pos. 25, 26, 27, and 28 |
| 29 | 925780 | 1 | 100-> | Claw |
| 30 | 012902 | 1 | 100-> | Base Washer |
| 31 | 925775 | 1 | 100-> | Cover |
| 32 | 925935 | 8 | 100-> | Carrying Device |
| 33 | 032435 | 24 | 100-> | Screw M8x35 |
| | 016005 | 24 | 100-> | Lock Nut M8 |
| 34 | 926098 | 24 | 100-> | Spacer |
| 35 | 926265 | 1 | 100-> | Rear Belt 28mm Opening |
| | 925933 | 1 | 100-> | Rear Belt 28mm with Carrying Device |
| 36 | 926049 | 1 | 100-> | Overhead Belt |

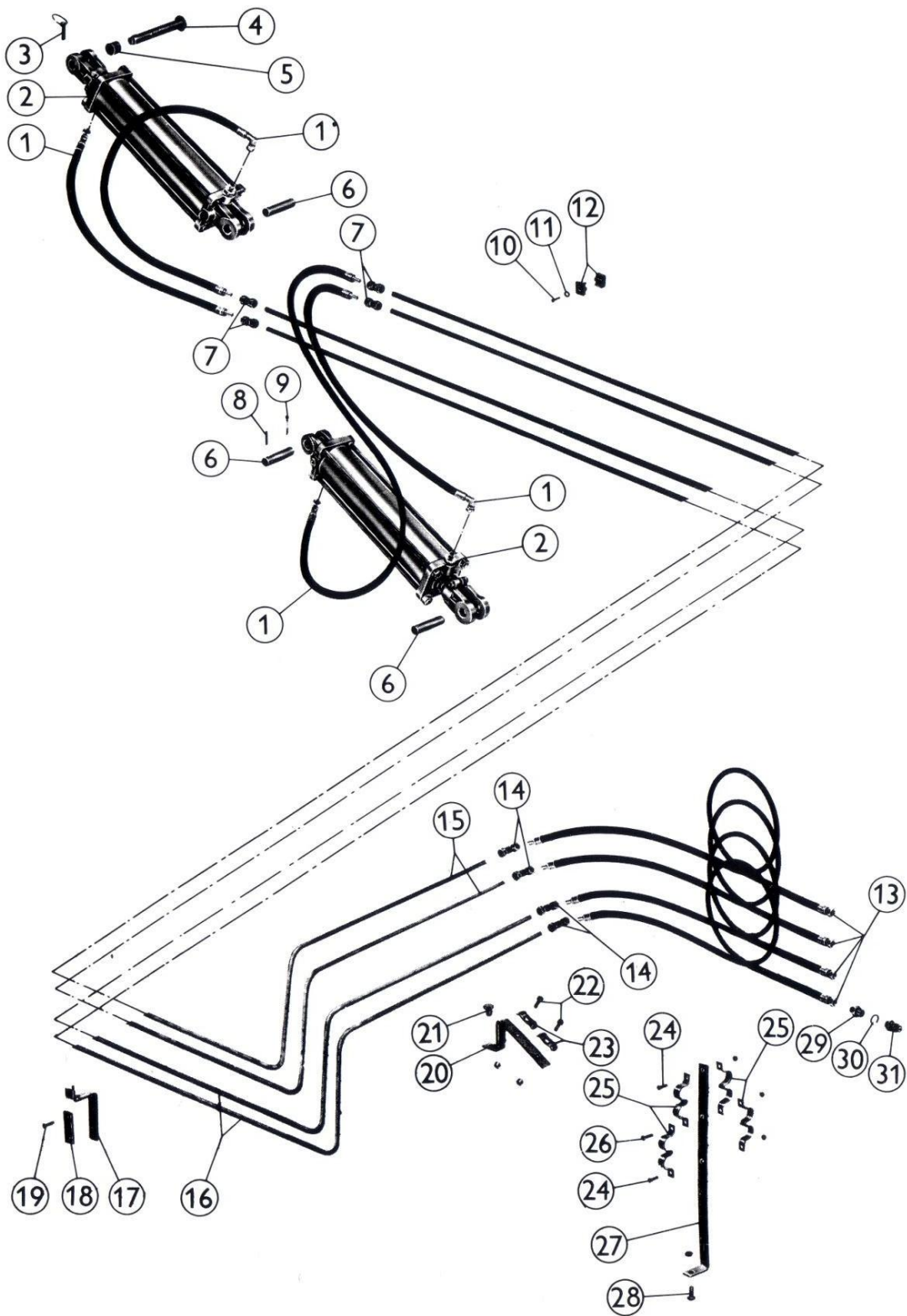
| | | | | |
|----------|--------|---|-------|------------------------------------|
| 37 | 926269 | 1 | 100-> | Main Belt 28mm Opening |
| | | | 100-> | Main Belt 33mm Opening |
| | 926273 | 1 | 100-> | Main Belt 44mm Opening |
| | 926276 | 1 | 100-> | |
| NOT ILL. | | | | Belt Splice for 28mm Belt Complete |
| | 926426 | X | 100-> | Belt Splice for 33mm Belt Complete |
| | 926427 | X | 100-> | Belt Splice for 44mm Belt Complete |
| | 926428 | X | 100-> | Spindle for Main Belt |
| | 926270 | X | 100-> | Spindle for Rear Belt |
| | 926266 | X | 100-> | Spindle for Overhead Belt |
| | 926270 | X | 100-> | Main Belt 28mm Opening |

8.3 Chain and drive shafts

| POS | Art.no | Qty. | Serial no. | Description |
|-----|--------|------|------------|-------------------------|
| 1 | 925701 | | 100-> | Spline Shaft |
| 2 | 925707 | | 100-> | Sleeve |
| 3 | 940350 | 1 | 100-> | Gearbox T-278A |
| 4 | 015823 | | 100-> | Nut M16 Low |
| 5 | 015825 | | 100-> | Nut M16 |
| 6 | 032190 | | 100-> | Pin Screw M16x90 |
| 7 | 015817 | 1 | 100-> | Nut M12 |
| 8 | 032020 | 1 | 100-> | Threaded Pin M12x25 |
| 9 | 925932 | 2 | 100-> | Cross |
| 10 | 940089 | 2 | 100-> | Wedge |
| 11 | 033525 | 4 | 100-> | Screw M10x25 |
| 12 | 012985 | 2 | 100-> | Snap Ring 10mm |
| 13 | 010702 | | 100-> | Cotter Pin 6mm |
| 14 | 926467 | 1 | 100-> | Bracket for Cover |
| 15 | 012985 | 1 | 100-> | Base Washer |
| 16 | 033525 | 1 | 100-> | Screw M12x25 |
| 17 | 011283 | 1 | 100-> | Retaining Ring |
| 18 | 029900 | 1 | 100-> | Grease Nipple |
| 19 | 033420 | 2 | 100-> | Screw M8x20 |
| 20 | 016005 | 1 | 100-> | Lock Nut M8 |
| | 032650 | 1 | 100-> | Screw M12x50 |
| 21 | 016008 | 1 | 100-> | Lock Nut M12 |
| | 012920 | | 100-> | Base Washer |
| 22 | 011218 | 1 | 100-> | Foot Bearing Ø35mm |
| 23 | 925872 | 1 | 100-> | Cover Mount |
| 24 | 940144 | 1 | 100-> | Protection Sleeve |
| 25 | 925354 | 1 | 100-> | Power Take-Off Shaft |
| 26 | 032645 | 1 | 100-> | Screw M12x45 |
| 27 | 016008 | 1 | 100-> | Lock Nut M12 |
| | 010515 | 2 | 100-> | Foot Bearing Ø40mm |
| 28 | 011284 | 2 | 100-> | Retaining Ring |
| 29 | 925784 | 2 | 100-> | Special Screw |
| 30 | 016008 | 1 | 100-> | Lock Nut M12 |
| 31 | 033680 | 1 | 100-> | Screw M12x80 |
| 32 | 925839 | 1 | 100-> | Tooth Ring 24t |
| 33 | 925658 | 8 | 100-> | Tooth Ring 17t |
| | 925652 | 24 | 100-> | Tooth Ring 15t |
| | 925984 | 24 | 100-> | Tooth Ring 12t |
| 34 | 925653 | 24 | 100-> | Drive Wheel |
| 35 | 925737 | 1 | 100-> | Wedge |
| 36 | 032123 | 1 | 100-> | Threaded Pin M12x20 |
| 37 | 925659 | 2 | 100-> | Drive Wheel with Flange |

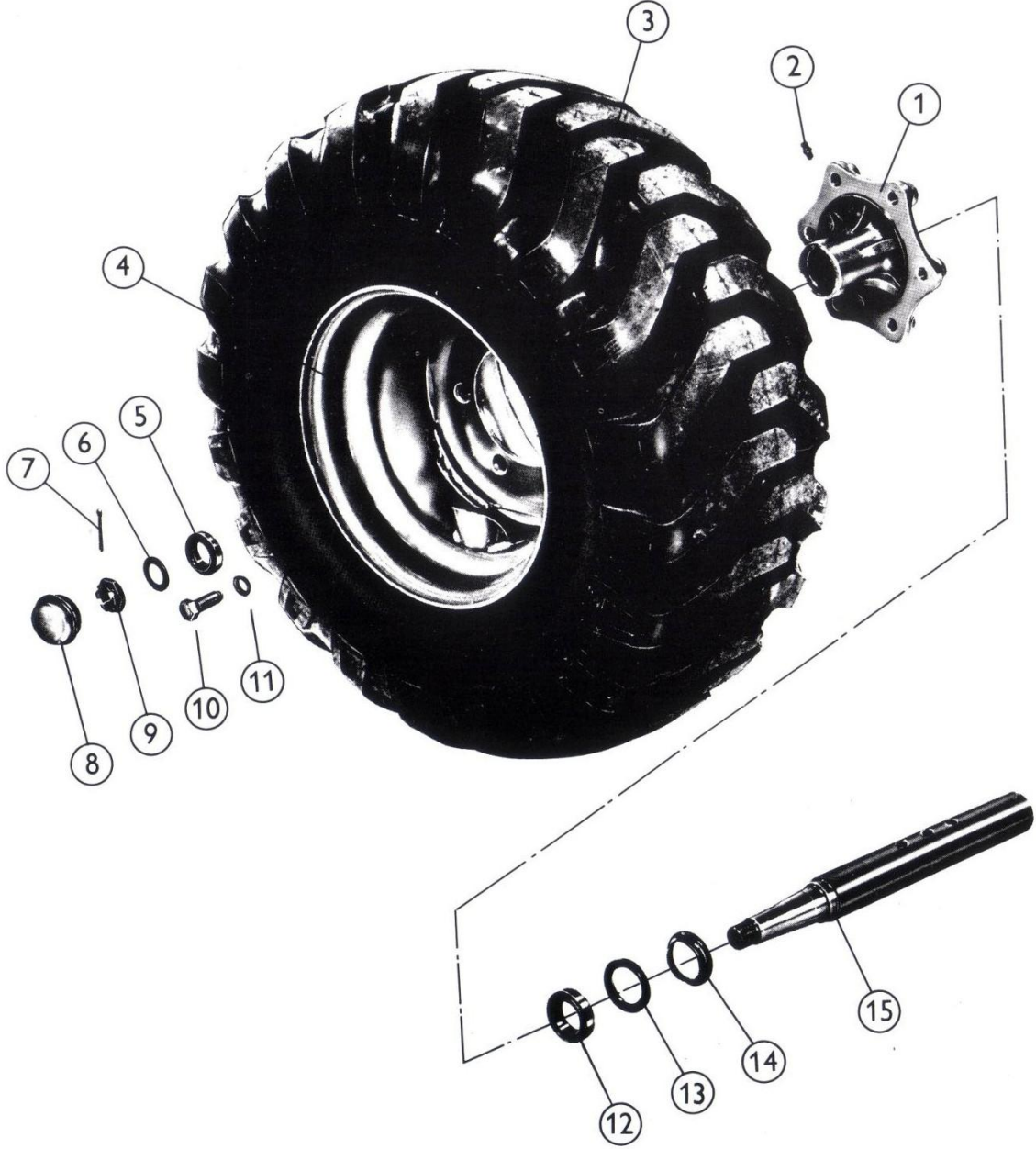
| | | | | |
|-----------------|--------|---|--------|--|
| 38 | 925751 | | 100-> | Sprocket 1" 12Z |
| 39 | 925234 | | 100-> | Chain Lock 1" Simplex |
| 40 | 925786 | | | |
| 40 | 011274 | 1 | 100 -> | Chain 1" |
| 41 | 925785 | 1 | 100 -> | Safety Ring |
| 42 | 925745 | 1 | 100 -> | Chain 1" |
| 43 | 925746 | 1 | 100 -> | Drive Shaft Main Belt |
| 44 | 925765 | 1 | 100 -> | Drive Shaft Rear Belt |
| 45 | 015830 | 1 | 100 -> | Sprocket with Bearing 1" |
| 46 | 032865 | 1 | 100 -> | Nut M20 |
| 47 | 015833 | | 100 -> | Screw M20x65 |
| 48 | 012945 | | 100 -> | Nut M20 Low |
| 49 | 925736 | | 100 -> | Base Washer |
| 50 | 033640 | 1 | 100 -> | Intermediate Shaft |
| 51 | 16008 | | 100 -> | Screw M12x40 |
| | 925752 | | 100 -> | Lock Nut M12 |
| 52 | 032804 | | 100 -> | Sprocket 1" |
| 53 | 016000 | | 100 -> | Screw M20x110 |
| | 925661 | | 100 -> | Lock Nut M20 |
| 54 | 925964 | | 100 -> | Carrier Roller Ø80mm |
| 55 | 925963 | 1 | 100 -> | Sprocket 1" |
| 56 | 925965 | 1 | 100 -> | Boss |
| 57 | 032570 | 1 | 100 -> | Sprocket 1" |
| 58 | 016006 | | 100 -> | Screw M10x70 |
| | 032805 | | 100 -> | Lock Nut M10 |
| 59 | 016000 | | 100 -> | Screw M20x120 |
| | 032750 | | 100 -> | Lock Nut M20 |
| 60 | 015830 | | 100 -> | Screw M20x50 |
| | 012904 | | 100 -> | Nut M20 |
| 61 | 926484 | | 100 -> | Base Washer |
| 62 | 926450 | 4 | 100 -> | Carrier Roller Ø130mm |
| 63 | 926453 | 1 | 100 -> | Front Carrier Roller Frame |
| 64 | 926106 | 1 | 100 -> | Rear Carrier Roller Frame |
| 65 | 925966 | 1 | 100 -> | Rear Belt Carrier Roller Frame |
| NOT ILL. | | | | |
| X | 925786 | 1 | 100 -> | Sprocket with Breakage Protection Complete |

8.3 Hydraulic



| POS | Art.no | Qty. | Serial no. | Description |
|-----------------|--------|------|------------|-------------------------------------|
| 1 | 013102 | 6 | 100 -> | Hydraulic Hose |
| 2 | 351010 | 4 | 100 -> | Cylinder Ø100x400 |
| 3 | 010700 | 2 | 100 -> | Cotter Pin |
| 4 | 925781 | 2 | 100 -> | Bolt |
| 5 | 925801 | 2 | 100 -> | Sleeve |
| 6 | 102536 | 6 | 100 -> | Bolt |
| 7 | 011575 | 8 | 100 -> | Straight Coupling |
| 8 | 011042 | | 100 -> | Pin Ø6 |
| 9 | 029733 | | 100 -> | Cotter Pin |
| 10 | 032325 | | 100 -> | Screw M6x25 |
| 11 | 012904 | | 100 -> | Base Washer |
| 12 | 012171 | | 100 -> | Mounting Clamp |
| 13 | 012214 | 4 | 100 -> | Hydraulic Hose |
| 14 | 011553 | 4 | 100 -> | T-Coupling |
| 15 | 925804 | 1 | 100 -> | Hydraulic Tube Wheel Cylinder Right |
| | 925805 | 1 | 100 -> | Hydraulic Tube Wheel Cylinder Left |
| 16 | 925806 | 1 | 100 -> | Hydraulic Tube Tip Cylinder Right |
| | 925807 | 1 | 100 -> | Hydraulic Tube Tip Cylinder Left |
| 17 | 925894 | 1 | 100 -> | Support |
| 18 | 925770 | 3 | 100 -> | Orvel |
| 19 | 033425 | 1 | 100 -> | Screw M8x25 |
| | 016005 | 1 | 100 -> | Lock Nut M8 |
| 20 | 925767 | 1 | 100 -> | Pipe Holder |
| 21 | 033730 | 1 | 100 -> | Screw M16x30 |
| | 015825 | 1 | 100 -> | Nut M16 |
| 22 | 033630 | 2 | 100 -> | Screw M12x30 |
| | 015817 | 2 | 100 -> | Nut M12 |
| 23 | 061942 | 1 | 100 -> | Hose Holder |
| 24 | 032420 | 3 | 100 -> | Screw M8x20 |
| | 015811 | 3 | 100 -> | Nut M8 |
| 25 | 123820 | 1 | 100 -> | Hose Holder |
| 26 | 032430 | 1 | 100 -> | Screw M8x30 |
| 27 | 925760 | 1 | 100 -> | Stand |
| 28 | 033630 | 1 | 100 -> | Screw M12x30 |
| | 016008 | 1 | 100 -> | Lock Nut M12 |
| 29 | 011567 | 4 | 100 -> | Thread Transition |
| 30 | 011565 | 4 | 100 -> | Sealing Ring |
| 31 | 012114 | 4 | 100 -> | Quick Coupling ½" |
| NOT ILL. | | | | |
| X | 011815 | 1 | 100 -> | Gasket Set for 351010 |

8.4 Wheel and hubs



| POS | Art.no | Qty. | Serial no. | Description |
|----------|--------|------|------------|--------------------------|
| 1 | 011491 | 2 | 100 -> | Hub |
| 2 | 029918 | 2 | 100 -> | Grease nipple (straight) |
| 3 | 011342 | 2 | 100 -> | Tire 400x15.5 |
| 4 | 011344 | 2 | 100 -> | Rim |
| 5 | 011243 | 2 | 100 -> | Roller bearing |
| 6 | 012953 | 2 | 100 -> | Washer |
| 7 | 029728 | 2 | 100 -> | Cotter pin |
| 8 | 011161 | 2 | 100 -> | Hub cap |
| 9 | 011164 | 2 | 100 -> | Crown nut M30 |
| 10 | 011162 | 2 | 100 -> | Hub screw M18x2.5 |
| 11 | 011163 | 2 | 100 -> | Conical snap ring |
| 12 | 011242 | 2 | 100 -> | Roller bearing |
| 13 | 011166 | 2 | 100 -> | Sealing ring |
| 14 | 011165 | 2 | 100 -> | Sealing plate |
| 15 | 926550 | 2 | 100 -> | Shaft |
| | 926551 | 2 | 100 -> | Shaft with hub complete |
| NOT ILL. | | | | |
| X | 011361 | 2 | 100 -> | Wheels |
| X | 011362 | 2 | 100 -> | Wheel 400/60-15.5 |

WWW.UNDERHAUG.NO

PRODUCER:

Underhaug AS
4365 Nærbø
N-NORWAY